



1



2



3



4



5



6

LOGGING IN NATIONAL PARKS

- The something we all must do to accurately capture the data live is create a log.
- If on paper then transcribe to a digital format that is ACCEPTABLE to LogSearch.
- Transfer digital data from laptop/phone or tablet to a state coordinator for upload.



7

LOGGING IN NATIONAL PARKS

- Why..??
- To gain yourself credit for the activation, awards, etc.
- To fulfil your obligation to the Hunters of your activation.
- Hunters don't get to upload and rely on you to get it right.
- Ultimately to turn data into information... WWFF, VKFF, etc.

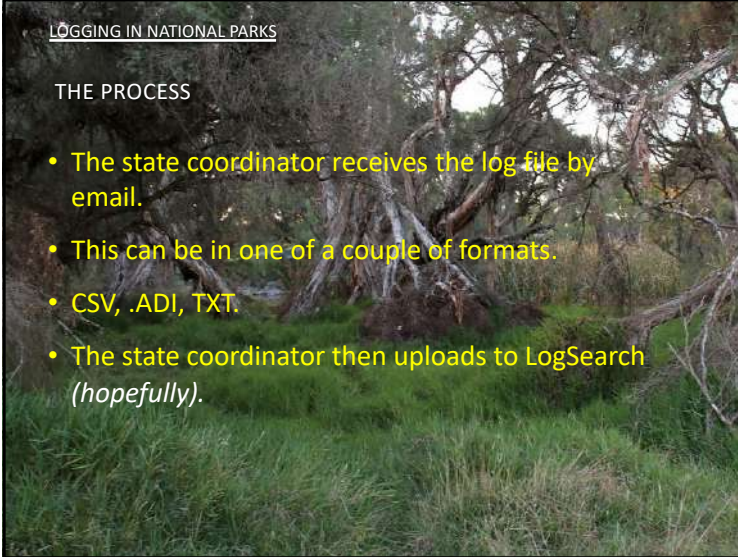


8

LOGGING IN NATIONAL PARKS

THE PROCESS

- The state coordinator receives the log file by email.
- This can be in one of a couple of formats.
- CSV, .ADI, TXT.
- The state coordinator then uploads to LogSearch *(hopefully)*.

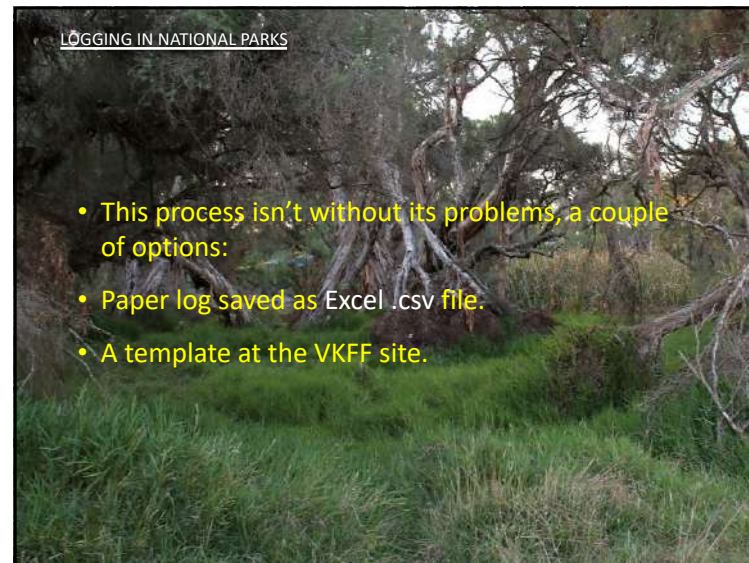


9

LOGGING IN NATIONAL PARKS



10



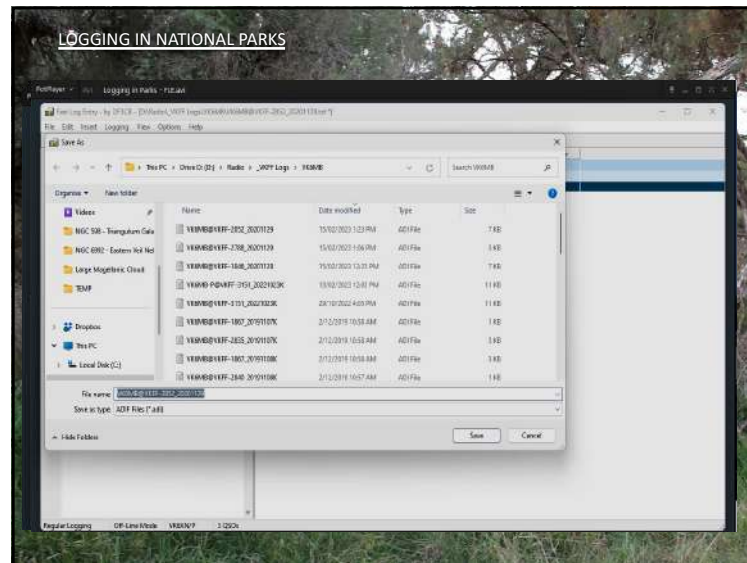
11

LOGGING IN NATIONAL PARKS

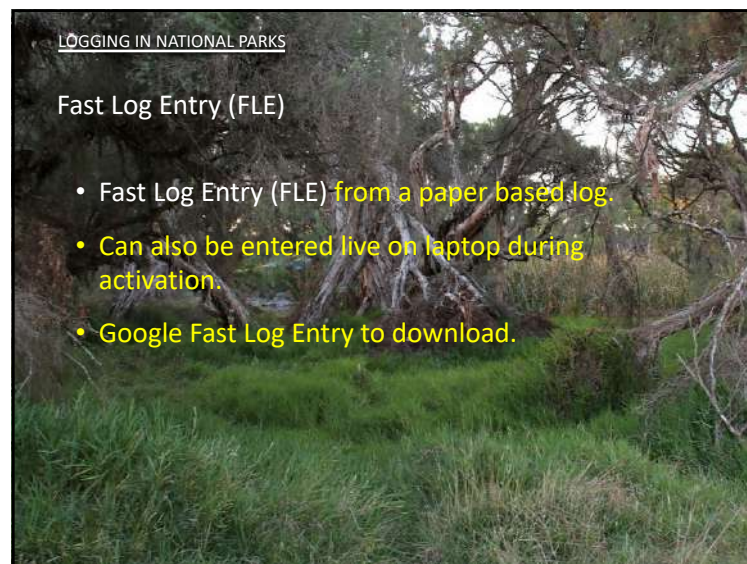
stationCall	operatorCall	reference	qsoDate	qsoTime	qsoBand	qsoMode	hunterCal	hunterRef	EOH
VK6NDX	VK6NDX/D	VKFF-2842	20210606	115 40m	SSB	VK3MDC			EOR
VK6NDX	VK6NDX/P	VKFF-2842	20210606	117 40m	SSB	VK3S15			EOR
VK6NDX	VK6NDX								EOR
VK6NDX	VK6NDX						NA		EOR
VK6NDX	VK6NDX						IL		EOR
VK6NDX	VK6NDX								EOR
VK6NDX	VK6NDX						G	VKFF-2572	EOR
VK6NDX	VK6NDX						F	VKFF-2572	EOR
VK6NDX	VK6NDX						Z	VKFF-0770	EOR
VK6NDX	VK6NDX						C		EOR
VK6NDX	VK6NDX/P	VKFF-2842	20210606	230 40m	SSB	VK3AZN			EOR
VK6NDX	VK6NDX/P	VKFF-2842	20210606	251 20m	SSB	VK2PAA			EOR
VK6NDX	VK6NDX/P	VKFF-2842	20210606	304 20m	SSB	VK2H8G		VKFF-2572	EOR
VK6NDX	VK6NDX/P	VKFF-2842	20210606	305 20m	SSB	VK2BYF		VKFF-2572	EOR
EOF									

Save as a .CSV file.

12



13



14


LOGGING IN NATIONAL PARKS

VK Port-a-log

- Android or Apple
- Phone or Tablet

IMPORTANTLY:

- Creates data files with the correct format and labels.
- Many shortcuts & prompts.
- Stores peoples names.
- Spotting.
- Etc.



15

LOGGING IN NATIONAL PARKS

```

File Edit View

Generated on 2022-09-23T23:05:31.416Z
<adif_ver:5>3.0.5
<programid:5>HAMRS
<programversion:5>1.0.6
<EOH>

<band:3>40m
<call:6>VK8ZMX
<cnty:4>AUST
<freq:5>7.193
<mode:3>SSB
<my_cnty:3>AUS
<my_gridsquare:6>PH57ri
<my_sig:4>VKFF
<my_sig_info:0>VKFF-1629
<my_state:2>NT
<name:7>PATRICK
<operator:6>VK8DNT
<qso_date:8>20220605
<qso_date_off:8>20220605
<qth:6>DARWIN
<rst_rcvd:2>59
<rst_sent:2>59
<state:2>NT

```

16



```

Generated on 2022-09-23T23:05:31.416Z
<adif_ver:5>3.0.5
<programId:5>HAMRBS
<programVersion:5>1.0.6
<EOR>

<band:3>40m
<call:6>WV829X
<cnty:4>AUST
<freq:5>7.193
<mode:3>SSB
<my_cnty:3>AUS
<my_gridsquare:6>PH57r1
<my_state:2>NT
<name:7>PATRICK
<operator:6>AK80JH
<qso_date:8>20220605
<qso_date_off:8>20220605
<qth:6>DARWIN
<rst_rcvd:2>59
<rst_sent:2>59
<state:2>NT
<station_callsign:5>WV8DA
<time_on:6>005427
<time_per:2>50
<MY_SIG:4>MWF <MY_SIG_INFO:9>VKFF-2862 <eor>

<band:3>10m
<call:5>VK3YF

```

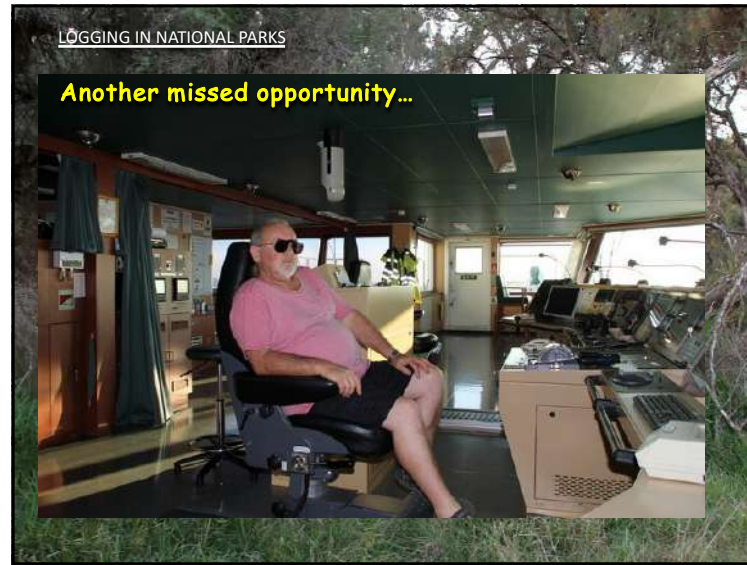
17

**LOGGING IN NATIONAL PARKS**

When preparing to submit a log, please:

- Check the park reference is correct.
- Check the park program is correct.
- Use a preferred log program whenever possible, they make your life easier too.
- Use a bit of patience, sometimes state coordinators are busy too...
- If you are not sure, ask the [state](#) coordinator first.

18



19



20



21